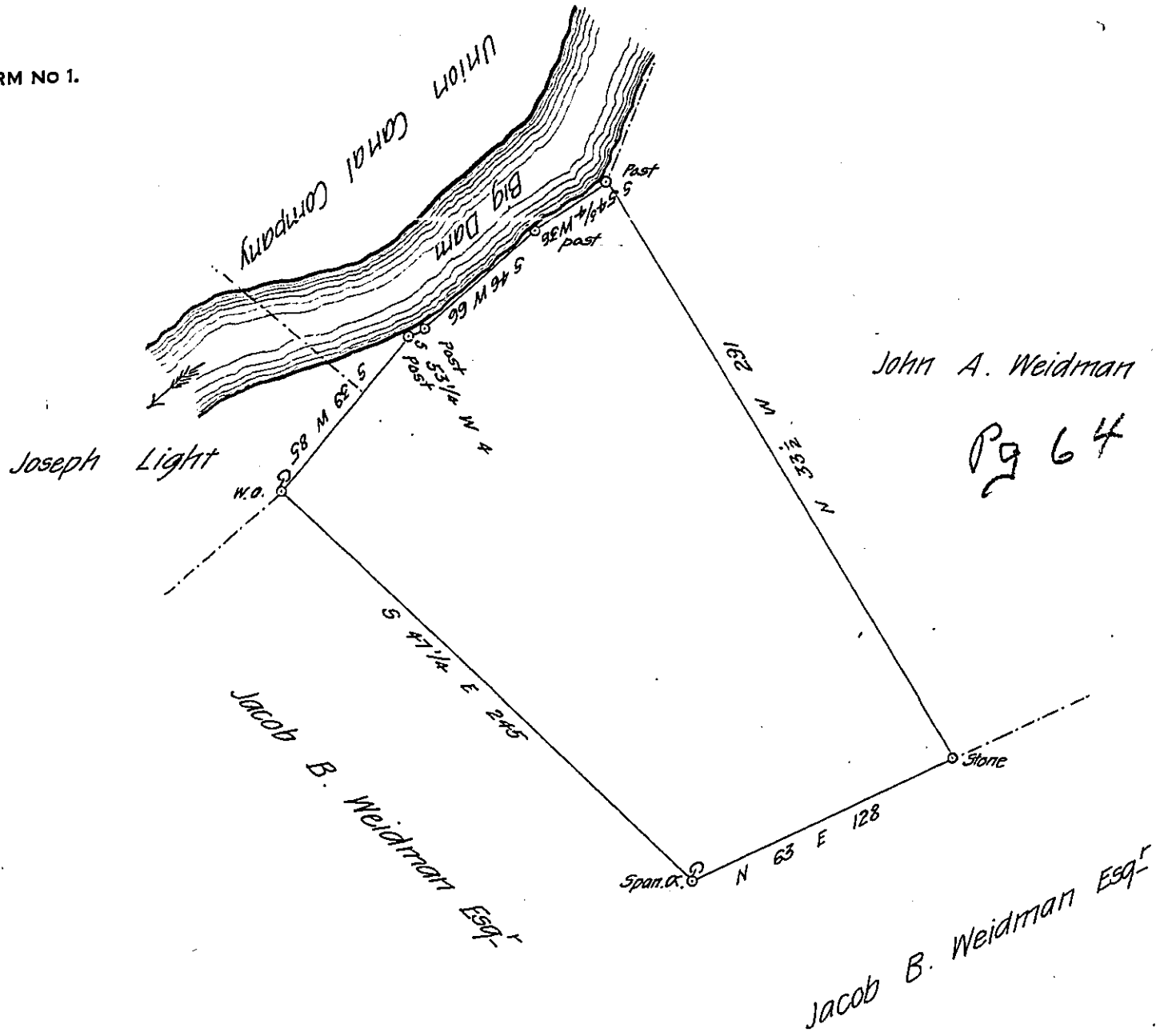


FORM No 1.



The above described tract of land Situate on the North side of the Blue or Kittaning Mountain in Swatara Township in the County of Lebanon containing two hundred and fifty-two Acres & twelve perches and the usual Allowance &c. surveyed the 17<sup>th</sup> day of Novem<sup>r</sup> 1836 in pursuance of a Warrant dated the 28<sup>th</sup> day of June 1836 Granted to Jacob Weidle Surveyed & returned the above tract of land for Jacob B. Weidman Esq<sup>r</sup>

Ezekiel Cherington D.S.

To John Taylor Esq<sup>r</sup>

Surveyor General of Penn<sup>a</sup>

IN TESTIMONY that the above is a copy of the original remaining on file in the Department of Internal Affairs of Pennsylvania, made conformably to an Act of Assembly approved the 16th day of February, 1833, I have hereunto set my Hand and caused the Seal of said Department to be affixed at Harrisburg, this twenty sixth day of August 1907

*Henry Gould*  
Secretary of Internal Affairs.